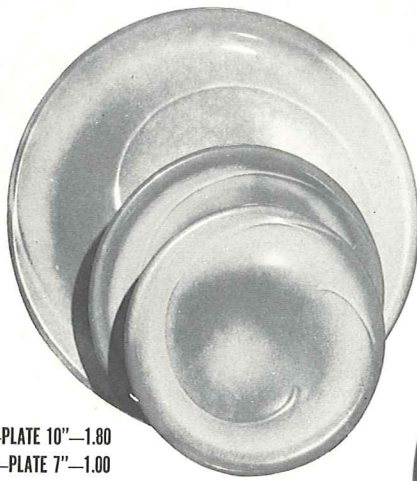


4K—BUTTER DISH—2.00



4F—PLATE 10"—1.80  
4G—PLATE 7"—1.00  
4E—5" SAUCER—.75



4S—BONE DISH 6½"—1.00



4X—CEREAL 16 OZ.—1.00



5L—12 OZ TUMBLER—.75



5LC—6 OZ. JUICE—.75



4C—7 OZ. CUP—.75



4Y—6" SPOON HOLDER—1.00



4H—SALT & PEPPER—1.50



4V—BAKER 2 QT.—3.00



4A—8 OZ. CREAMER—1.00



4B—SUGAR WITH LID—1.50



4M—MUG 18 OZ.—1.20



4Z—6" SOUP—1.00



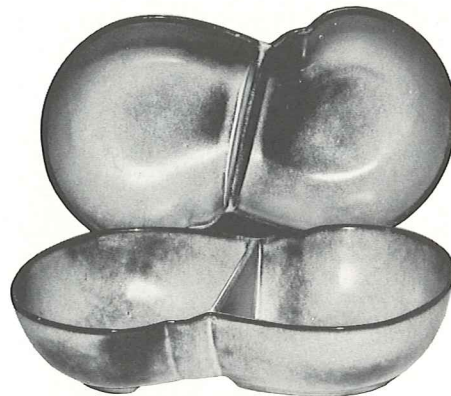
4N—VEGETABLE 24 OZ.—1.50



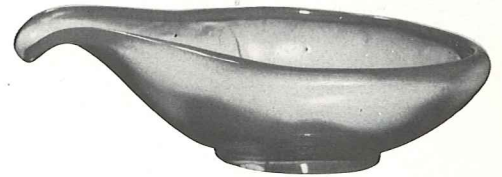
4P—13" PLATTER—2.50



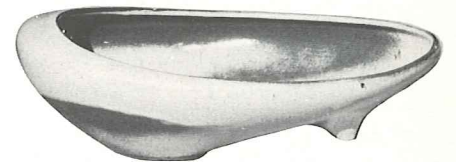
4W—BAKER 3 QT.—4.00



4QD—11" DIVIDED BOWL—2.50



214—SERVICE BOWL 12"—2.50



231—SERVICE BOWL 11"—2.50



BP—6 OZ. BEAN POT—.75



818—5 SECTION LAZY SUZETTE ON  
RAIL BEARING BASE—12"—7.00



4D—PITCHER 2 QUART—3.00



4XL—24 OZ. SALAD OR GUMBO—1.25

THIS PAGE AVAILABLE IN PRAIRIE GREEN, DESERT GOLD, BROWN SATIN.

SIZES ARE APPROXIMATE AND MAY VARY SLIGHTLY.